



Time, Terrain, Tradition, and Technology: The USMC in the Pacific, 1941-1945

Geography Gallery Worksheet

*We have fought in every clime and place
Where we could take a gun;
In the snow of far off northern lands
And in the sunny tropic scenes;
You will find us always on the job—
The UNITED STATES MARINES*

The Marine's Hymn, second verse

Directions: Start at the entrance to the World War II Gallery (Uncommon Valor) and continue until you reach the end. **The questions begin as you enter the exhibit and are arranged in order. Pay attention!**

Geography can be defined as *the study of the Earth and its features and of the distribution of life on the earth, including human life and the effects of human activity*. **Geography** has significantly influenced events throughout history, including the outcome of wars. **Geography** includes **TERRAIN**—physical features such as mountains, jungles, oceans, and volcanic islands—but it also includes attributes like **TIME**, **TRADITION**, and **TECHNOLOGY**. As the second verse of The Marine's Hymn proclaims, the United States Marine Corps has fought in every climate and every place since its founding in 1775. Between 1941 and 1945, the Marine Corps fought throughout the Pacific. Today, Marines continue to defend American interests in places like Iraq and Afghanistan.

Think about what the pictures below symbolize. Then answer the questions that follow.



How does **TIME** influence historical events?



How does **TERRAIN** influence historical events?



How does **TRADITION** influence historical events?



How does **TECHNOLOGY** influence historical events?

World War II 1940-1945: Uncommon Valor



1. During WWII, most Marines fought in the _____ against _____.

2. Japanese aggression toward its neighbors began years before the attack on the American naval base at Pearl Harbor, Hawaii, in 1941. What areas of Asia did Japan invade in the 1930s?



Emperor
Hirohito



3. Why do you think an island nation such as Japan—with an industrial economy, large population, and powerful military—would seek to control neighboring countries?



4. Japan was not the only country becoming increasingly aggressive toward its neighbors in the 1930s and 1940s. Under Adolf Hitler, Germany's Blitzkrieg (lightning war) spearheaded the invasions of what European countries?



5. Find the series of photographs labeled “**American Snapshot.**” What do these images tell us about what life was like in the United States at the outbreak of World War II? Think about aspects of life such as entertainment, jobs, sports, and transportation.



6. Within 10 weeks after the attack on Pearl Harbor, Japan had captured what other areas of the Pacific?





7. An **archipelago** is a chain or cluster of islands, usually found in open seas, and often created by volcanic activity. Find the large map of the Pacific Ocean below the Wake Island flag. Identify any one of the **archipelagos** on this map and write its name below.



8. Weapons of war are often designed to operate in a particular environment. Find the **M3A1 Stuart light tank** called “Blood and Guts.” Although not well suited for fighting in Europe against the German Army, why was the Stuart tank effective for Pacific Island fighting?



9. Find the Japanese flag in the large case of World War II weapons. Why do you think this design was chosen to represent the nation of Japan?

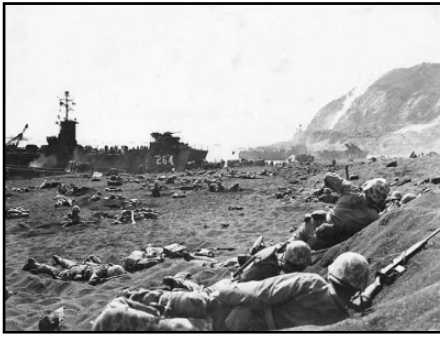


10. The Pacific Ocean is a vast expanse of water, covering about one-third of the Earth’s total surface. Find the large wall map labeled “**The Central Pacific.**” Why was the capture of the Mariana Islands so important to American victory in the Pacific?



11. **Amphibious warfare** is the use of naval ships to deliver troops to attack enemy-held territory on land. During World War II, the USMC—through determination and innovation—mastered the art of amphibious warfare. Think about the unique geography of the Pacific Ocean. How was **amphibious warfare** essential to American victory over Japan?





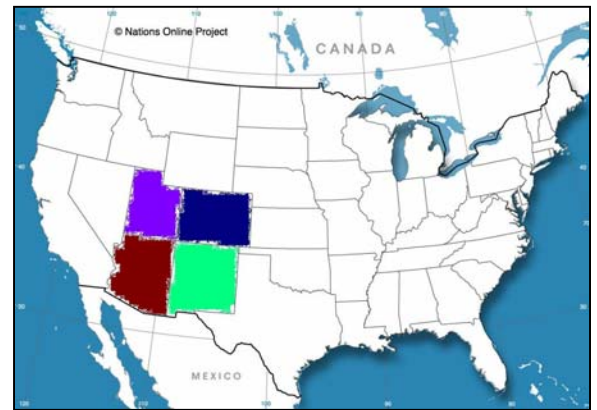
12. The island of Iwo Jima has been called “one of the strangest battlefields in history.” Which of the following features made the fighting on Iwo especially difficult?



- a. volcanic rock and ash
- b. man-made tunnel system
- c. natural caves
- d. all of the above



13. The Navajo Code Talkers were a group of Native Americans who served in the United States Marine Corps during World War II. Their mission was to send and receive secret coded messages that the enemy could not understand. Using the map at right, identify the four (4) states the Navajo call home.



14. On what two (2) Japanese cities did the United States drop the atomic bomb in August 1945?



National Museum of the Marine Corps

Education Department

<http://www.usmcmuseum.com>

This worksheet may be reproduced by teachers only for educational purposes.